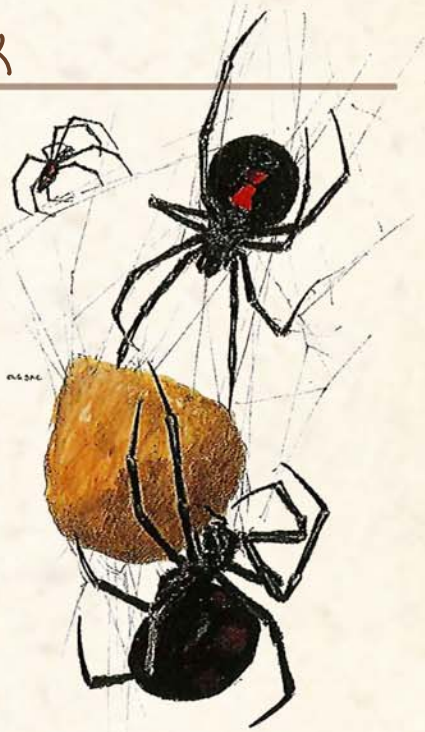
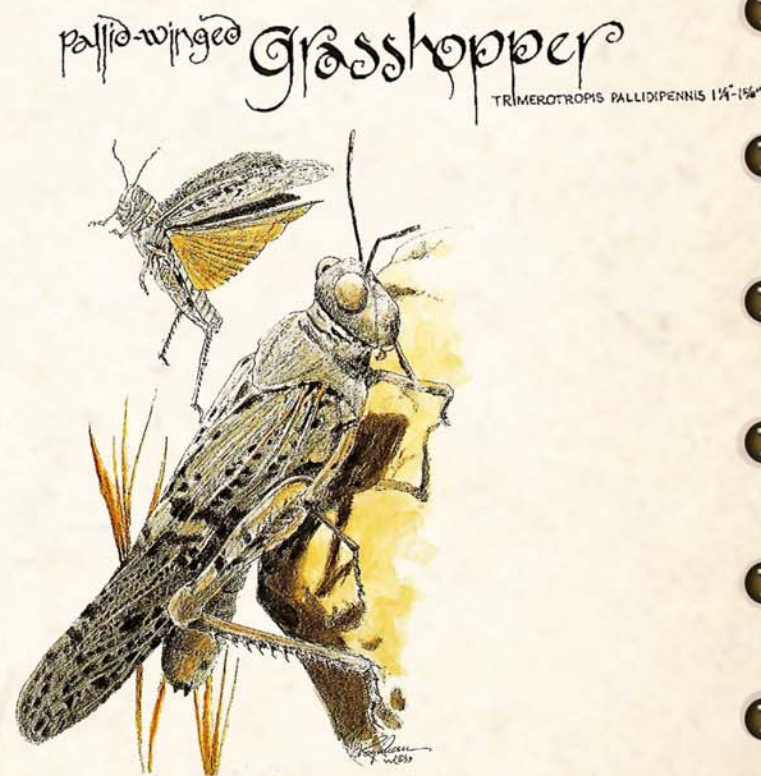


Native Wildlife of Sunset Park

It is common for wildlife to be seen in Sunset Park, where native plants and ornamental landscaping may serve as food, water and shelter. You may see wildlife any time of year, but especially in early morning, late afternoon or early evening. Leave all wildlife alone, enjoy from a distance and never attempt to handle or catch them.



Black Widow Spider
LATRODECTUS HESPERUS SPECIES 1/2-3/4" body



pallid-winged Grasshopper
TRIMEROTROPIS PALLIDIPENNIS 1 1/4"-1 1/2"

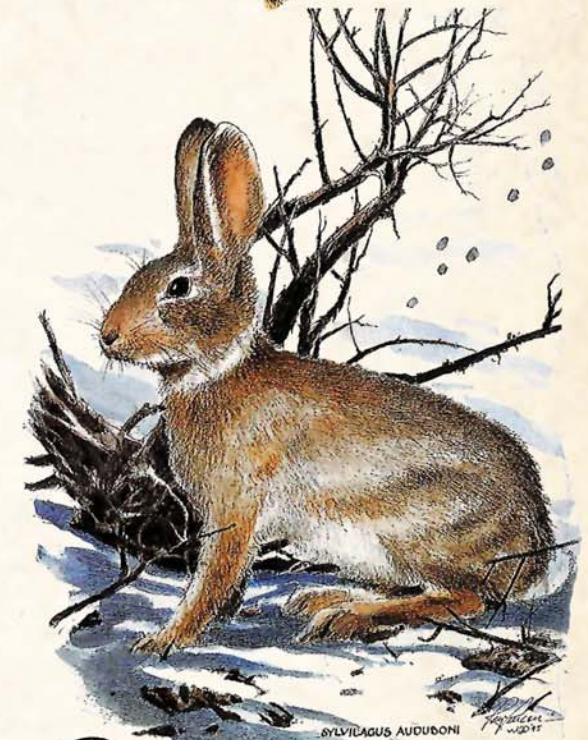
Western Whiptail
CNEMIDOPHORUS TIGRIS



Red Skimmer
LIBELLULA SASKIATA 1 1/2-2 1/4"



Gambel's Quail
CALLIPEPLA GAMBELII



Desert Cottontail
SYLVILAGUS AUDUBONI



Dusty Discovery's Tips for spotting wildlife

- ★ Stay still and quiet
- ★ Use binoculars
- ★ Use a field guide to help you identify what you see
- ★ Watch for tracks, scat and other signs that animals are nearby
- ★ Watch for activity near water or food sources such as blossoms, fruit and seeds

